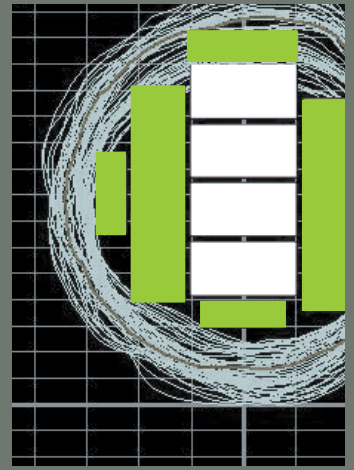


SCAN TECH 2010



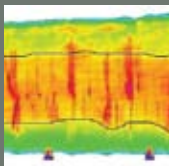
SAWMILL SCANNING & OPTIMISATION TECHNOLOGIES

Melbourne, Australia

26 - 27 July 2010



EVENT SPONSORS



DAY ONE – 26 JULY 2010

8.30am Welcome & Introduction *FIEA*

8.45am Key Note Address: Australia's Sawmilling Industry - Past, Present & Future.
Dennis Neilson, Director, DANA Ltd, NZ

SESSION 1: SCANNING FOR LOG MERCHANDISING & PRIMARY BREAKDOWN

9.30am Log Merchandising Optimisation using X-ray Internal Scanning.
Dick Komori, Sales & Marketing Manager, MPM Engineering, Canada

10.15am Morning Tea & Networking

10.45am Vision Scanning of Lumber. Determining corewood within the cant for optimising grade recoveries.
Marc Chenard, Optimisation Engineer, Comact, Canada

11.30am Case Study - Rosvall Sawmill. Selection, installation, commissioning and operation of a new True Shape 3D log scanner and carriage optimiser. Lessons for Australasian sawmilling operations.
Brian Smith, Director, Automation Electronics & John Wilby, Western Sales Manager, ScanMeg, Canada

12.00pm Lunch & Networking

1.00pm Scanning Innovation on the Carriage for Greater Recoveries.
Joey Nelson, President, JoeScan, USA

1.45pm Advances in X-ray and CT Scanning for Logs. Stem bucking optimisation in the merchandising yard combining X-ray with new high definition digital scanning and pattern recognition. Developments in X-ray scanning and total breakdown optimisation in saw lines.
Federico Giudiceandrea, CEO, MiCROTEC, Italy

2.15pm Case Study - Carriage Scanning, Tenon Sawmill. Replacement of an existing scanning system with a new scanner and optimisation system - on a high speed carriage. Addressing the issues, what were the challenges and what have been the results!
Brian Smith, Director, Automation Electronics, NZ & John Wilby, Western Sales Manager, ScanMeg, Canada

2.45pm Afternoon Tea & Networking

3.15pm Industry Panel Discussion 1: Selecting scanning and optimisation technology. Criteria the end user is looking for, issues in implementing the technology and pitfalls to look out for.
Mat Thomsen, Hyne Tumbarumba, Geoff Oxley, Highland Pine, Wayne Green, CHH Caboolture, Roger Timms, Acora Reneco

3.45pm Technology Showcase - Managed Exhibitions

5.00pm Refreshments

6.30pm Conference Dinner

DAY TWO – 27 JULY 2010

SESSION 2: OPTIMISING LUMBER GRADE RECOVERIES IN THE MILL

9.00am Case Studies – Chilean and North American Sawmilling Operations. Optimised log merchandising through to cant breakdown.
Bob Learmonth, BC & Pacific Sales Manager, Comact, Canada

9.30am Lumber Grade Scanning – New Advances in Scanning Technologies.
Chris Blomquist, Vice President USNR, USA

10.00am Morning Tea & Networking

10.30am High Speed Lumber Marking with Laser Technology. An innovative new lumber marking and tracking system for rough sawn and planed lumber throughputs.
Kevin Wilkie, Director, Cumberland Systems Ltd, NZ

11.00pm Advances in Multi-Sensor Technologies for Lumber Sorting in the Mill.
Federico Giudiceandrea, CEO, MiCROTEC, Italy

11.30pm Case Study - CHH Kawerau Mill. A low cost system for automated lumber grading in the green-mill.
Robert Hodge, Sales and Marketing Manager, Camsensor Technologies Ltd, NZ

11.50pm When is a Second Hand Scanning System a Good Buy? When is the right time, what needs to be done in the mill and long term performance issues – if any.
Malcolm Jones, Engineering Director, Tui Technology, NZ

12.20pm Lunch & Networking

1.00pm Practicalities of Maintaining and Managing Scanning and Optimisation Performance. Reasonable expectations for optimisation systems, maintenance and simple daily checks, monitoring performance, managing price tables, setting parameters in a logical way.
Blair Muter, Director, Lumber Solutions Ltd, NZ

1.30pm Industry Panel Discussion 2: Maintaining/managing scanning & optimisation equipment in the mill for long term good performance.
Mat Thomsen, Hyne Tumbarumba, Geoff Oxley, Highland Pine, Wayne Green, CHH Caboolture, Roger Timms, Acora Reneco

SESSION 3: ACOUSTICS TO OPTIMISE LUMBER SORTING

2.15pm What's behind Acoustic and Microwave Technologies? What they can measure, their respective strengths and weaknesses and expected accuracies in the mill. Future developments?
Doug Gaunt, Researcher, Scion, NZ

2.45pm Case Study - Structural Timber Grading Optimisation using Acoustics in the Green Mill.
Hayden Frew, General Manager, Calibre Equipment, NZ

3.15pm Conference Concludes. Afternoon Tea & Networking.

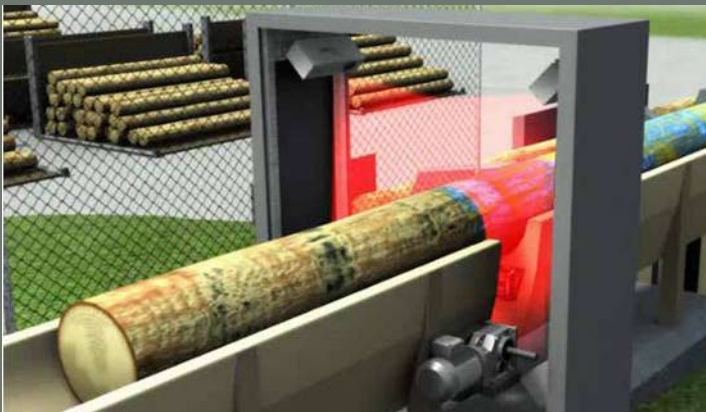
ScanTECH 2010 Conference Details

ScanTECH 2010 is back by popular demand. This event is eagerly awaited by Australasian wood processors. It has become the region's most comprehensive independent two-yearly update showcasing the very latest innovations in scanning and sawmill optimisation.

Scanning and mill optimisation technologies are dramatically changing the face of the wood processing industry. Value recovery improvements of between 5% and 20% have been achieved by sawmills through;

- Advances in true shape scanning
- The design of sophisticated breakdown equipment in the mill
- Commercialisation of X-ray and CT internal log scanning
- Optimisation software to determine the best value solution for processing each log.

ScanTECH 2010 provides local sawmills with a unique opportunity to assess world leading technologies best suited to the local wood resource and the size of our processing operations. The practical programme of workshops, discussions and managed exhibitions enables a wide cross section of sawmill staff from a company or site to evaluate technologies best suited to their own operations.



Why should you attend?

- Networking, networking, networking – meet face-to-face all major international technology suppliers and like-minded colleagues from around Australia.
- Hear new research and commercial applications for x-ray and other internal log scanning.
- Look at global innovations that have been developed in green mill lumber sorting.
- See advancements that have been made in scanning and sawmill optimisation software.
- Learn from local and international case studies how leading sawmills have selected, commissioned and run this new technology.

Who should be attending?

Site and sawmill managers, production managers, supervisors, engineering, maintenance and operational staff. Related equipment, product and service suppliers will also benefit from attending this technology series.

ScanTECH 2010 Website: www.scantechevents.com

Melbourne Venue: Bayview Eden Melbourne, 6 Queens Rd, Melbourne, Australia

Website: www.bayviewhotels.com/eden

Accommodation: Bayview Eden Melbourne is an award winning 4 1/2 Star Boutique Hotel situated conveniently on Queens Rd overlooking the picturesque Albert Park Lane and Port Philip Bay. Special room rates from \$169 have been set up at Bayview Eden Melbourne. These rates are available if you state you are attending the ScanTECH 2010 conference when making the booking. For room reservations, please book directly on phone (+61) 3 9250 2222 or book using the hotel's website.

Presented by: Forest Industry Engineering Association (FIEA), a division of Innovatek Ltd. Please note that FIEA reserves the right to change the programme, if required, without prior knowledge to event delegates.

FIEA GOLD SPONSORS

Osmose

Preservation Technology at Work

SE Söderhamn Eriksson

Trimble
FORESTRY AUTOMATION

Ultimate Positioning
Mapping & GIS Solutions

new zealand LOGGER

HOLTEC

Forest & Wood Products Australia
Knowledge for a sustainable Australia

d3p

Where Takiura waiariki
INSTITUTE OF TECHNOLOGY

COMACT

FIEA SILVER SPONSORS

ils

INDUSTRIAL LUBRICANTS AND SERVICES LIMITED

FITEC
change me to waste

MEDIA PARTNERS

fridayOFFCUTS
first choice for wood news

WoodWeek
with products to boost profits

ScanTECH 2010

Bayview Eden Melbourne, 6 Queens Rd, Melbourne, Australia
Conference Registration Form

SPECIAL Early Bird Discount: Register BEFORE Friday 18 June 2010

Delegate Details:

Name	Position	E-mail
Company:		
Postal Address:		
Tel:		Fax:

Programme Rates:

Activities	Rate Per Delegate	# of Delegates	Total
Early Bird Conference Rate (Before 18 June) - per Delegate	AU\$720		\$
Standard Conference Rate (After 18 June) - per Delegate	AU\$880		\$
Group Conference Rate (when booking 3 or more Delegates from the same site or office) – per Delegate	AU\$586		\$
Conference Dinner for Partners (Note: Dinner for registered Delegates is included in the Conference Rate)	AU\$60		\$

SUBTOTAL	\$
+ GST (10%)	\$
GRANDTOTAL	\$

- All prices exclude GST.
- Forest Industry Engineering Association (FIEA) member discounts of up to **25%** apply off the conference rate. Membership status can be checked by calling our FIEA offices.
- To be eligible for the Early Bird Rate, registrations must be received by FIEA **by Friday 18th June 2010**.
- Your conference registration payment covers morning and **afternoon teas, lunches the conference dinner, refreshments** and a hardcopy of the **detailed event proceedings**.

Note: Because of the expected interest in the programme, 50% of the fee will be refunded for late cancellations if notice is received before **Friday 16 July 2010**. Cancellations after this date will not qualify for a refund. However, other persons within the same company can attend in place of the cancelled registered delegate.

Payment:

<input type="checkbox"/> Cheque payable to Forest Industry Engineering Association enclosed, or
<input type="checkbox"/> Direct credit our Bank of Melbourne Account: 033115-137710, Innovatek Ltd, or
<input type="checkbox"/> Please debit my MasterCard/Visa/Amex (circle one)
Amount Enclosed: \$
Credit card number:
Expiry date:
Cardholder's name:
Cardholder's signature:

PLEASE RETURN TO:

Forest Industry Engineering Association,
PO Box 6150, Rotorua 3043, New Zealand
Fax: +64 7 921 1381,
E-mail: libby.stulen@fiea.org.nz

FOR MORE INFORMATION:

Contact us on 1800 126 398,
OR register electronically on
www.scantechevents.com

If you are interested in sponsorship or display opportunities at this event contact:
Gordon Thomson, Ph: +64 7 921 1384
Email: gordon.thomson@fiea.org.nz